

ZID08-34F+

INPUT INTERFACE PORT

DS-108 Issue 05



Thank you for your interest in Zitel - we are a UK based manufacturer of PAGA and Intercom products. Our systems are mainly designed for use in the Hazardous Oil, Gas and Petrochemical industries.

The ZID08-34F+ allows a Zitel PAGA system to communicate with other site systems. Units are DIN rail mount and connect to the host ZX100 via a multi drop RJ45 patch cord network enabling up to 516 optically isolated or voltage controlled inputs. The module accepts either dry contact OR voltage controlled inputs.

ZITTEL ZID08-34F+ FEATURES:

Optically isolated inputs – *EMC secure*

Engineers configuration screen – *Rapid service*

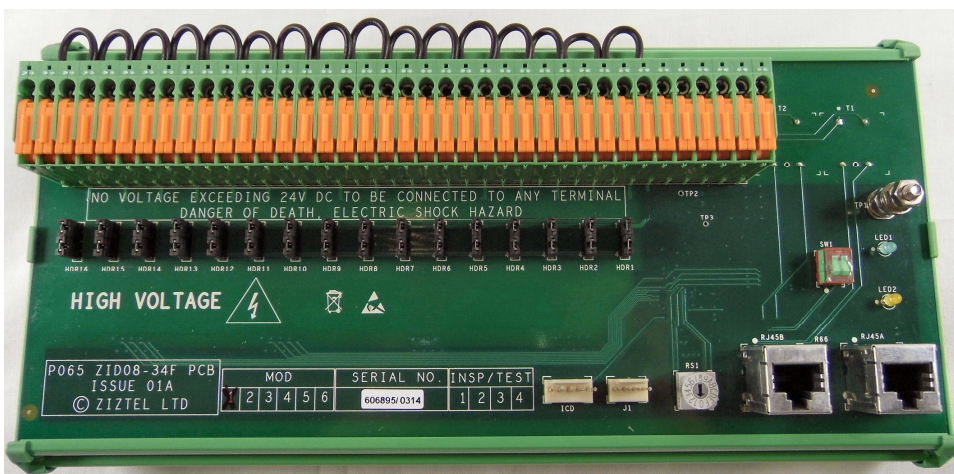
Plug/socket integration into host equipment – *Easy installation*

Modular and expandable – *Up to 512 inputs*

ZID08-34F+ is a 'feature enhanced' backward compatible version of ZID08-34F, The ZID08-34F+ accepts up to sixteen optically coupled digital inputs which can be voltage controlled or contact controlled. The unit also allows 2 aux analogue audio inputs and can be cascaded allowing up to 32 x ZID08-34F+ modules, this extends digital inputs to maximum 512 per network. (Note analog inputs cannot be expanded using ZID08-34F+).

Photo below shows the ZID08-34F+, dual RJ45 patch cord sockets allow the communication network to be extended to multiple ZID08-34F+ modules on a loop in/out basis. The address of each

module is uniquely set by file download during Factory testing (FAT). A tamper proof patch field is included that allows the engineer to prescribe either 'dry contact' (volt-free contact) or voltage controlled input interface possibility for each channel.



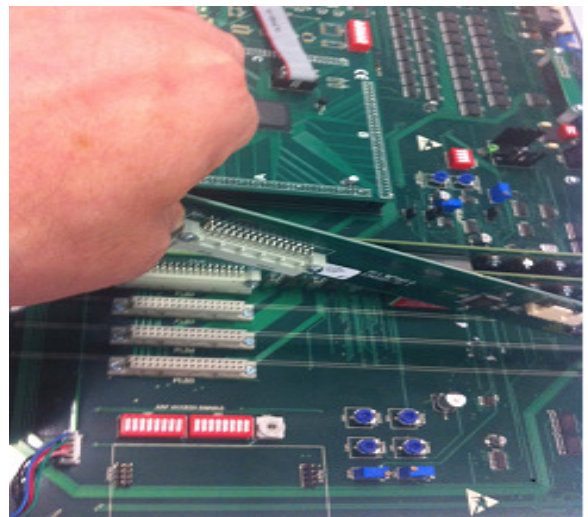
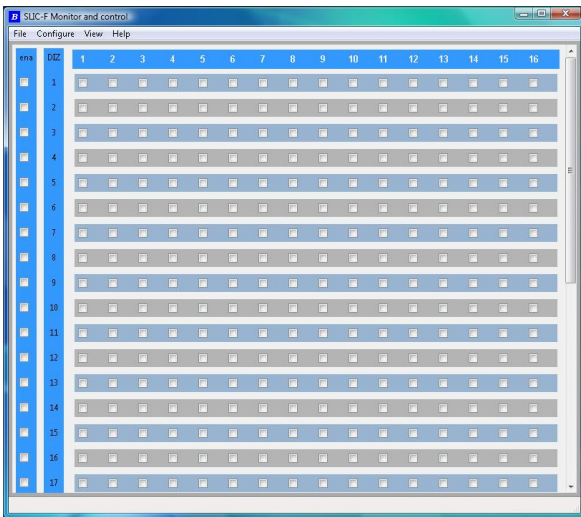
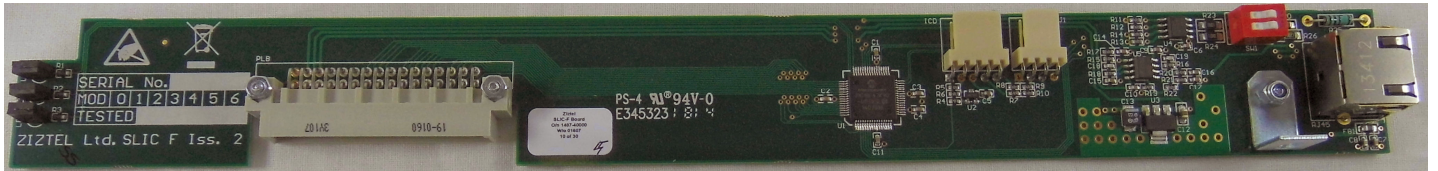
ZITTEL LIMITED

email: sales@zittel.com web: www.zittel.com tel: +44 (0) 115 9202888
mail: 96 Rolleston Drive, Arnold, Nottingham, NG5 7JP United Kingdom

All text, drawings and photography contained within this data sheet are the property of Zitel Ltd and are subject to copyright. Information may neither be transmitted or copied to third parties without the express written consent of Zitel Ltd. Zitel Ltd have a policy of continuous product improvement and contents here in are liable to change without notice.

SLIC F:

The ZIDo8-34F+ operates in conjunction with a small processor card that plugs into the host ZX100 PAGA management unit. This card is called SLIC F and provides gateway to the ZX100 main processing system. The SLIC F is connected to ZIDo8-34F+ by an RJ45 patch cord that forms a local network capable of supporting up to 32 x ZIDo8-34F+ modules which allow up to 512 interface inputs to the host PAGA. Multiple SLIC F cards can be assigned where greater input capacity is required. An optional Windows display provides the engineer status of each input, a useful feature for systems with multiple interface connections.

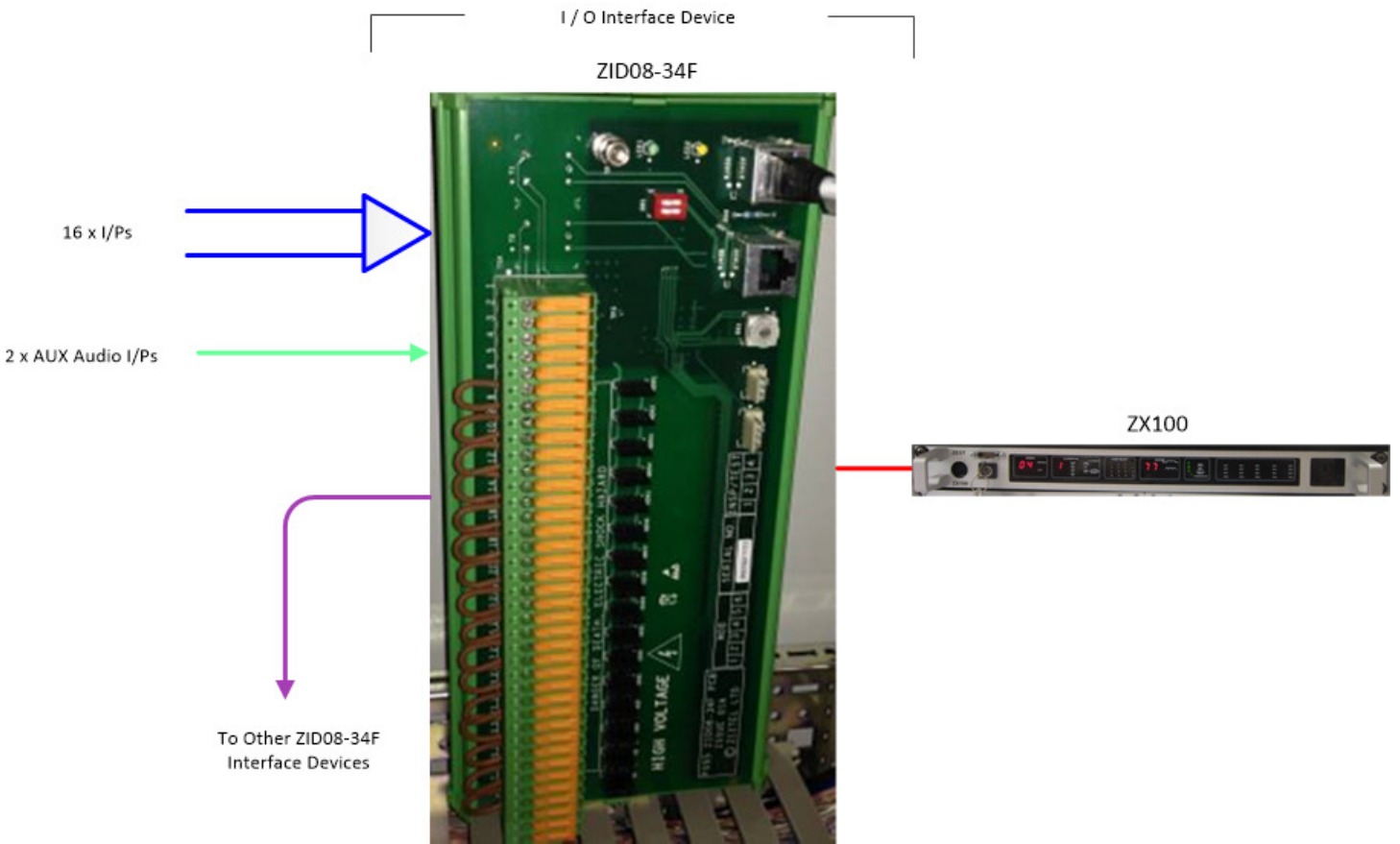


Technical Specification	
Number of inputs	16 per ZIDo8-34F+ module
Number of Outputs	1 (RS485)
Power Supply	48V _{DC}
Audio Inputs	2
Event Outputs	0
Copper Pair Sync	0
Temperature	-20°C to +70°C
Relative Humidity	80% non-condensing
Weight	1kg
Operation	Safe area

ZIZTEL LIMITED

email: sales@ziztel.com web: www.ziztel.com tel: +44 (0) 115 9202888
 mail: 96 Rolleston Drive, Arnold, Nottingham, NG5 7JP United Kingdom

All text, drawings and photography contained within this data sheet are the property of Ziztel Ltd and are subject to copyright. Information may neither be transmitted or copied to third parties without the express written consent of Ziztel Ltd. Ziztel Ltd have a policy of continuous product improvement and contents here in are liable to change without notice.



ZIZTEL LIMITED

email: sales@ziztel.com web: www.ziztel.com tel: +44 (0) 115 9202888
 mail: 96 Rolleston Drive, Arnold, Nottingham, NG5 7JP United Kingdom

All text, drawings and photography contained within this data sheet are the property of Ziztel Ltd and are subject to copyright. Information may neither be transmitted or copied to third parties without the express written consent of Ziztel Ltd. Ziztel Ltd have a policy of continuous product improvement and contents here in are liable to change without notice.